



PowerSeeker® Series Telescopes

INSTRUCTION MANUAL

- *PowerSeeker 50AZ # 21039*
- *PowerSeeker 60AZ # 21041*
- *PowerSeeker 70AZ # 21036*
- *PowerSeeker 76AZ # 21044*

Table of Contents

INTRODUCTION	3
ASSEMBLY	6
Setting up the Tripod	6
Attaching the Telescope Tube to the Mount.....	7
Moving the Telescope Manually	8
Installing the Diagonal & Eyepiece (Refractor) – 60AZ	8
Installing the Diagonal & Eyepiece (Refractor) – 50AZ	8
Installing the Eyepiece on the Newtonian	9
Installing & Using the Barlow Lens	9
Installing & Using the 1.5x Erecting Eyepiece – 50AZ	9
Installing the Finderscope	10
Aligning the Finderscope.....	10
TELESCOPE BASICS	11
Image Orientation	12
Focusing.....	12
Calculating Magnification	12
Determining Field of View	13
General Observing Hints.....	13
ASTRONOMY BASICS	14
The Celestial Coordinate System.....	14
Motion of the Stars.....	15
CELESTIAL OBSERVING	16
Observing the Moon	16
Observing the Planets	16
Observing the Sun.....	16
Observing Deep-Sky Objects.....	17
Seeing Conditions	19
ASTROPHOTOGRAPHY	20
Short Exposure Prime Focus Photography	20
Planetary & Lunar Photography with Special Imagers.....	20
CCD Imaging for Deep-Sky Objects	20
Terrestrial Photography	20
TELESCOPE MAINTENANCE	21
Care and Cleaning of the Optics	21
Collimation of a Newtonian.....	21
OPTIONAL ACCESSORIES	24
POWERSEEKER SPECIFICATIONS	25

CELESTRON **Introduction**

Congratulations on your purchase of a PowerSeeker telescope. The PowerSeeker Series of telescopes come in several different models and this manual covers four models mounted on Alt-Az Mounts ((an altazimuth is the simplest type of mount with two motions – altitude (up & down) and azimuth (side-to-side)) --- 50mm refractor, 60mm refractor, 70mm refractor, and a 76mm Newtonian. The PowerSeeker Series is made of the highest quality materials to ensure stability and durability. All this adds up to a telescope that gives you a lifetime of pleasure with a minimal amount of maintenance.

These telescopes were designed for the First Time Buyer offering exceptional value. The PowerSeeker series features a compact and portable design with ample optical performance to excite any newcomer to the world of amateur astronomy. In addition, your PowerSeeker telescope is ideal for terrestrial observations which will open your eyes with its superb high power viewing.

PowerSeeker telescopes carry a **two year limited warranty**.

Some of the many standard features of the PowerSeeker include:

- All coated glass optical elements for clear, crisp images.
- Smooth functioning, rigid altazimuth mount with easy pointing to located objects.
- Preassembled aluminum tripod ensures a stable platform.
- Quick and easy no-tool set up.
- CD-ROM “The SkyX -- astronomy software which provides education about the sky and printable sky maps.
- All models can be used terrestrially as well as astronomically with the standard accessories included.

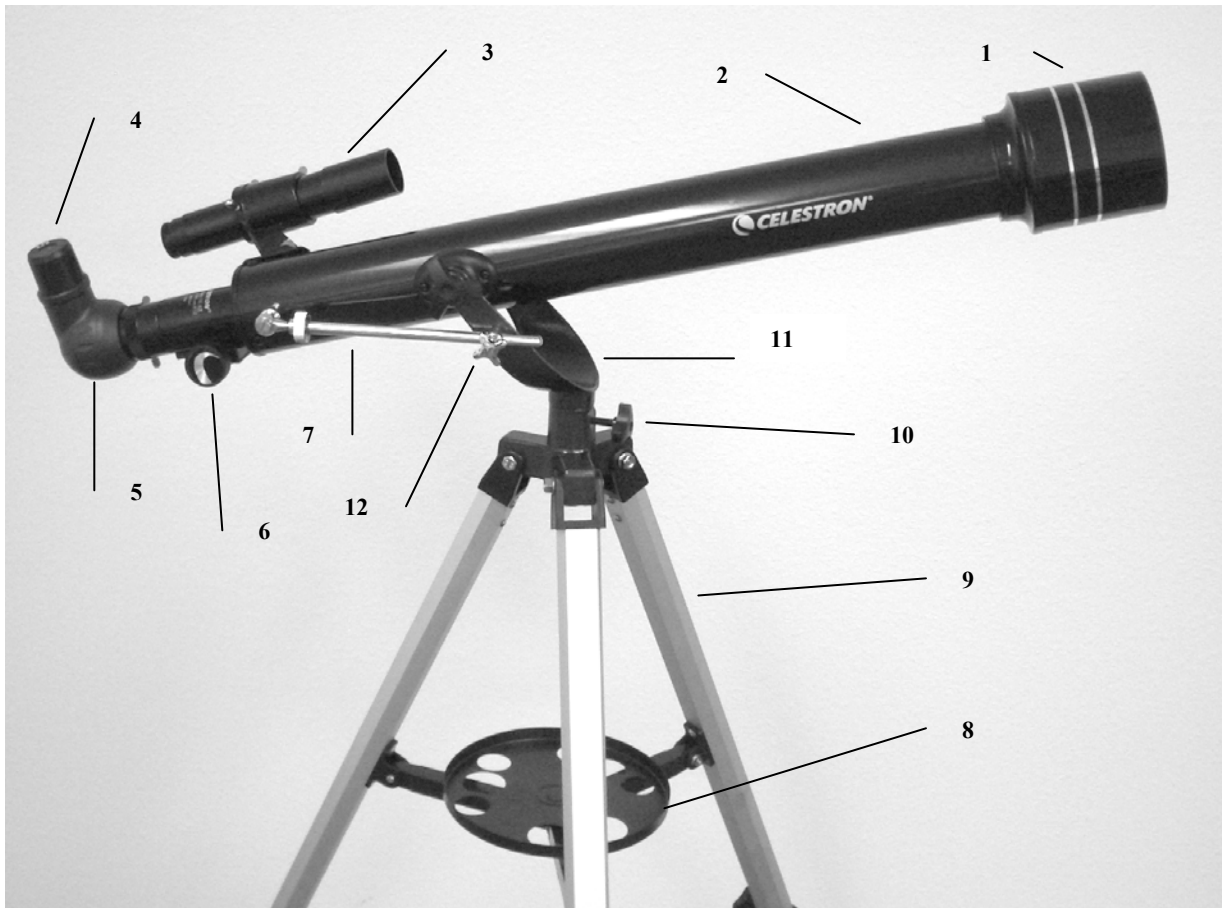
Take time to read through this manual before embarking on your journey through the Universe. It may take a few observing sessions to become familiar with your telescope, so you should keep this manual handy until you have fully mastered your telescope’s operation. The manual gives detailed information regarding each step as well as needed reference material and helpful hints to make your observing experience simple and pleasurable as possible.

Your telescope is designed to give you years of fun and rewarding observations. However, there are a few things to consider before using your telescope that will ensure your safety and protect your equipment.

Warning



- **Never look directly at the sun with the naked eye or with a telescope (unless you have the proper solar filter). Permanent and irreversible eye damage may result.**
- **Never use your telescope to project an image of the sun onto any surface. Internal heat build-up can damage the telescope and any accessories attached to it.**
- **Never use an eyepiece solar filter or a Herschel wedge. Internal heat build-up inside the telescope can cause these devices to crack or break, allowing unfiltered sunlight to pass through to the eye.**
- **Do not leave the telescope unsupervised, either when children are present or adults who may not be familiar with the correct operating procedures of your telescope.**



**Figure 1-1 PowerSeeker 60AZ Refractor
(PowerSeeker 50AZ & PowerSeeker 70AZ Similar)**

1.	Objective Lens	7.	Altitude Slow Motion Rod Assembly (not on 50AZ)
2.	Telescope Optical Tube	8.	Accessory Tray
3.	Finderscope	9.	Tripod
4.	Eyepiece	10.	Azimuth Lock (not on 50AZ)
5.	Diagonal	11.	Alt-Az Mount
6.	Focus Knob	12.	Altitude Locking Knob

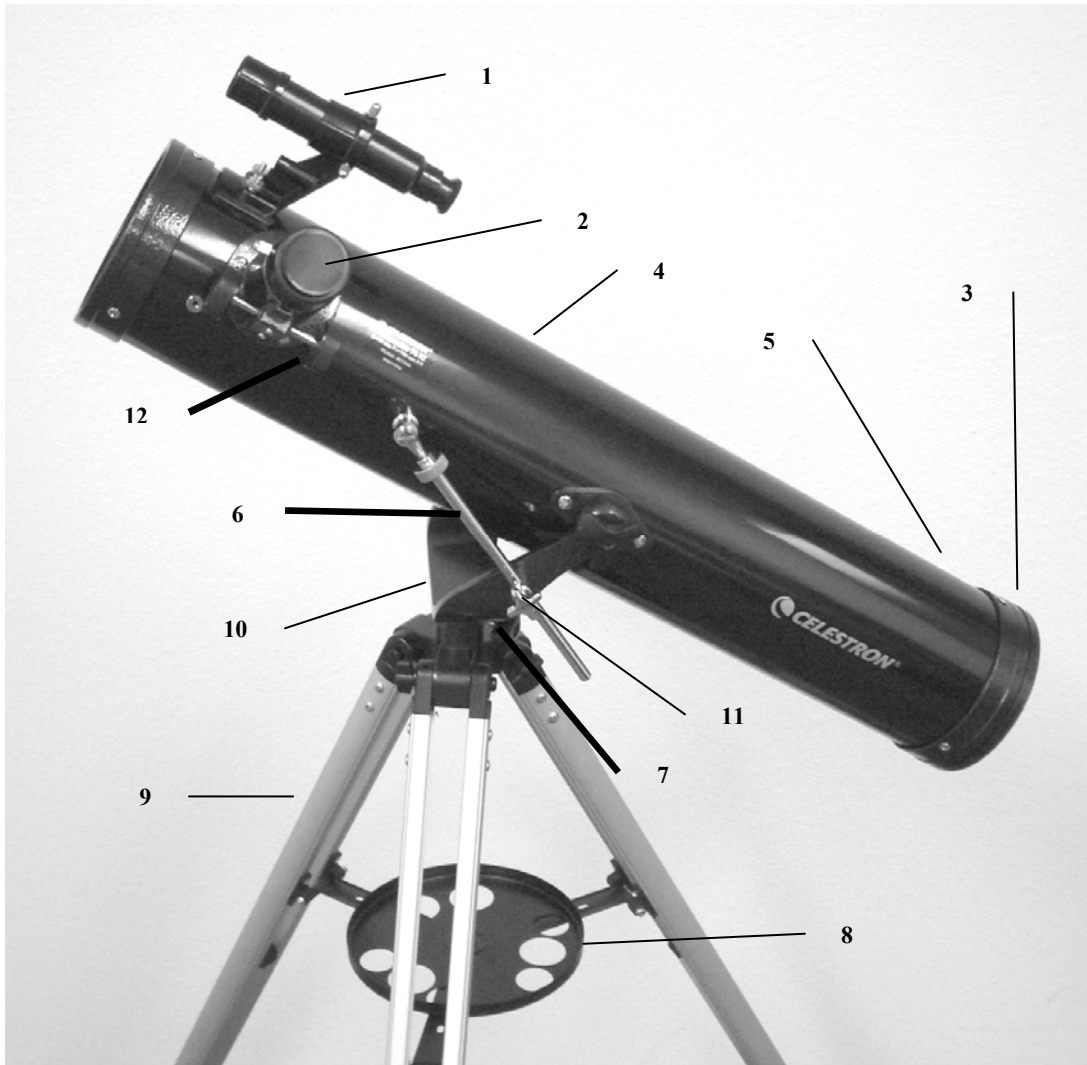


Figure 1-2 PowerSeeker 76AZ Newtonian

1.	Finderscope	7.	Azimuth Lock
2.	Eyepiece	8.	Accessory Tray
3.	Collimation Adjustment Screws (in rear)	9.	Tripod
4.	Telescope Optical Tube	10.	Alt-Az Mount
5.	Primary Mirror	11.	Altitude Lock
6.	Altitude Slow Motion Rod Assembly	12.	Focus Knob



This section covers the assembly instructions for your PowerSeeker telescope. Your telescope should be set up indoors the first time so that it is easy to identify the various parts and familiarize yourself with the correct assembly procedure before attempting it outdoors.

Each PowerSeeker comes in one box. The pieces in the box for all models are – optical tube, altazimuth mount, and “The SkyX” CD-ROM. The 50AZ includes 0.96” accessories – 20mm eyepiece, 12mm eyepiece, 4mm eyepiece, 3x Barlow lens, and 1.5x erecting eyepiece.

The 60AZ, 70AZ & 76AZ includes 1.25” accessories – 20mm eyepiece (erect image for 76AZ), 4mm eyepiece, 3x Barlow lens, erect image diagonal for 60AZ.

Setting up the Tripod

1. Remove the tripod from the box (Figure 2-1). The tripod comes preassembled so that the set up is very easy. Each tripod is different for each model but looks somewhat similar to the photos shown below.
2. Stand the tripod upright and pull the tripod legs apart until each leg is fully extended and then push down slightly on the tripod leg brace (Figure 2-2). The very top of the tripod is called the tripod head (AZ mount).
3. Next, we will install the tripod accessory tray (Figure 2-3) onto the tripod leg brace (center of Figure 2-2).
4. On the bottom of the tripod tray is a screw attached to the center (except the 50AZ). The screw attaches into a threaded hole in the center of the tripod leg brace by turning it clockwise - note: pull up slightly on the tripod leg brace to make it easy to attach. Continue turning the tray until hand tight – don’t over tighten the tray. The 50AZ is slightly different as you unthread a small knob in the center of the tray (see Figure 2-3a) and then put the tray over the threaded hole and tighten the knob to secure the tray.

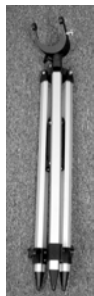


Figure 2-1



Figure 2-2



Figure 2-3



Figure 2-3a

5. The tripod is now completely assembled (Figure 2-4).
6. You can extend the tripod legs to the height you desire. At the lowest level the height is about 27” (69cm) and extends to about 47” (119cm). You unlock the tripod leg lock knobs at the bottom of each leg (Figure 2-5) by turning them counterclockwise and pull the legs out to the height you want & then lock the knobs securely. A fully extended tripod looks similar to the image in Figure 2-6.
7. The tripod will be the most rigid and stable at the lower heights.



Figure 2-4

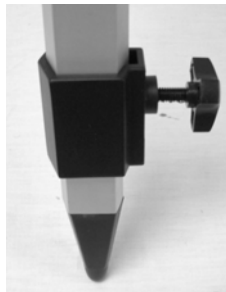


Figure 2-5



Figure 2-6

Attaching the Telescope Tube to the Mount

The telescope optical tube attaches to the altazimuth mount with the altitude slow motion rod assembly and the respective knobs for the 60AZ, 70AZ and 76AZ. The 50AZ attaches directly to the altazimuth mount head. Before starting, remove the objective lens cap (refractor) or the front opening cap (Newtonian). To mount the telescope tube to the mount for the 60AZ, 70AZ, and 76AZ:

- 1 Remove the protective paper covering the optical tube.
- 2 Put the telescope optical tube inside the yoke (altazimuth) mount so that the altitude slow motion rod assembly is on the same side as the altitude locking screw (see Figure 1-1). **Note that on some telescopes that the rod may be attached to the telescope optical tube. If the rod is not attached to the optical tube, remove the screw from the mechanism (with the provided tool) shown on the far left of Figure 2-7 and put the rod in place as shown in Figure 2-7. Then, put the screw through the hole in the rod and into the mechanism and tighten it.**
- 3 Thread the altitude locking knob out so the hole is clear in the eyebolt (see Figure 2-8).
- 4 Put the rod of the assembly through the eyebolt and then tighten the altitude locking knob – Figure 2-9.
- 5 Thread the two knobs (one on either side of the mount) through the top of the mount into the threaded holes in the optical tube and tighten – Figure 2-7.



Figure 2-7

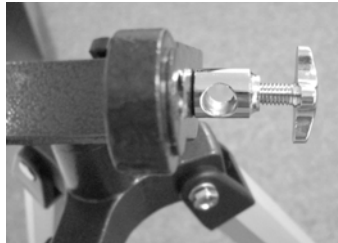


Figure 2-8

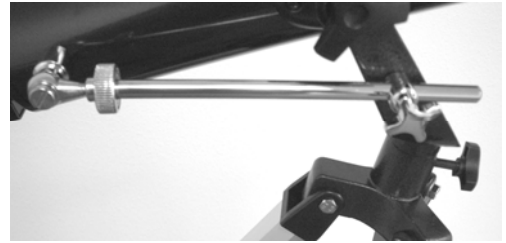


Figure 2-9

For the 50AZ, take the following steps:

1. Remove the protective paper covering the optical tube.
2. Place the telescope optical tube on the altazimuth mount so that the hole in the top of the optical tube platform lines up with the holes in the mount head – see Figure 2-11.
3. Insert the altitude locking knob (see center of Figure 2-10) through the mount head and optical tube platform (make sure the hole is clear all the way through before tightening the knob).



Figure 2-10



Figure 2-11

Moving the Telescope Manually

The PowerSeeker Alt-Az mount is easy to move wherever you want to point it. For the 60AZ, 70AZ, and 76AZ the up and down (altitude) is controlled by the altitude locking knob (Figure 2-12). The side-to-side (azimuth) is controlled by the azimuth lock (Figure 2-12). When both knobs are loose you can find your objects easily (through the finderscope) and then lock the controls.

For fine adjustments in altitude, you turn the knurled ring of the altitude slow motion rod (when the altitude lock is tight) in either direction – see Figure 2-9.



Figure 2-12

For the 50AZ model, loosen the altitude locking knob – Figure 2-9 and then move the telescope in the desired location you want and once there tighten the altitude locking knob.

Note: Before tightening the altitude locking knob, the location you are seeking should be located in the finderscope.

Installing the Diagonal & Eyepiece (Refractor) – 60AZ & 70AZ

The diagonal is a prism that diverts the light at a right angle to the light path of the refractor. This allows you to observe in a position that is more comfortable than if you had to look straight through. This diagonal is an erect image model that corrects the image to be right side up and oriented correctly left-to-right which is much easier to use for terrestrial observing. Also, the diagonal can be rotated to any position which is most favorable for you. To install the diagonal and eyepiece:

1. Insert the small barrel of the diagonal into the 1.25" eyepiece adapter of the focus tube on the refractor – Figure 2-13. Make sure the two thumbscrews on the eyepiece adapter do not protrude into the focuser tube before installation and the plug up cap is removed from the eyepiece adapter.
2. Put the chrome barrel end of one of the eyepieces into the diagonal and tighten the thumb screw. Again, when doing this make sure the thumbscrew is not protruding into the diagonal before inserting the eyepiece.
3. The eyepieces can be changed to other focal lengths by reversing the procedure in step 2 above.



Figure 2-13

Installing the Diagonal & Eyepiece (Refractor) – 50AZ



Figure 2-14

The diagonal for the 50AZ is called a star diagonal where the prism corrects the image to be right side up (erect image) but the image is reversed left-to-right. The diagonal and eyepieces are .96" diameter sizes. All steps above are the same with the 50AZ.

Installing the Eyepiece on the Newtonian

The eyepiece (or ocular) is an optical element that magnifies the image focused by the telescope. Without the eyepiece it would be impossible to use the telescope visually. Eyepieces are commonly referred to by focal length and barrel diameter. The longer focal length (i.e., the larger the number) the lower the eyepiece magnification (i.e., power). Generally, you will use low-to-moderate power when viewing. For more information on how to determine power, see the section on “Calculating Magnification”. The eyepiece fits directly into the focuser of the Newtonian. To attach the eyepieces:

1. Make sure the thumbscrews are not protruding into the focuser tube. Then, insert the chrome barrel of the eyepiece into the focus tube (remove the plug up cap of the focuser first) and tighten the thumbscrews – see Figure 2-15.
2. The 20mm eyepiece is called an erecting eyepiece since it corrects the image so it is right side up and corrected left to right. This makes the telescope useful for terrestrial viewing.
3. The eyepieces can be changed by reversing the procedure as described above.



Figure 2-15

Installing & Using the Barlow Lens

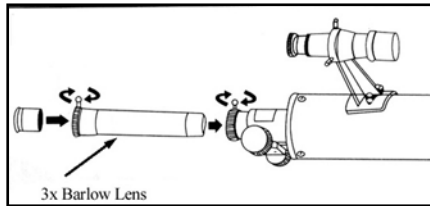


Figure 2-16

Your telescope also comes with a 3x Barlow Lens which triples the magnifying power of each eyepiece. However, the greatly magnified images should only be used under ideal conditions – see the Calculating Magnification section of this manual.

To use the Barlow lens with refractors, remove the diagonal and insert the Barlow directly into the focuser tube. You then insert an eyepiece into the Barlow lens for viewing. You can also, insert the diagonal into the Barlow lens and then use an eyepiece in the diagonal but you may not be able to reach focus with all eyepieces.

For Newtonian telescopes, insert the Barlow lens directly into the focuser. Then, insert an eyepiece into the Barlow lens.

Note: Start by using a low power eyepiece as it will be easier to focus.

Installing & Using the 1.5x Erecting Eyepiece – 50AZ

The PowerSeeker 50AZ comes with a 1.5x erecting eyepieces, primarily for daytime terrestrial viewing. This eyepiece corrects the image you see in your telescope, so that it's both right side up and corrected from left to right. Install and use this eyepiece the same way you do with the Barlow Lens in the section above. You cannot use the Barlow lens when using this eyepiece.

When using the erecting eyepiece, the power with various eyepieces is:

- w/ 20mm = 45x
- w/12mm = 75x
- w/ 4mm = 225x

Installing the Finderscope

To install the finderscope:

1. Locate the finderscope (it will be mounted inside the finderscope bracket) – see Figures 1-1 and 1-2.
2. Remove the knurled nuts on the threaded posts on the optical tube – see Figure 2-17.
3. Mount the finderscope bracket by placing it over the posts protruding from the optical tube and then holding it in place thread on the knurled nuts and tightening them down.
4. Note that the finderscope should be oriented so that the larger diameter lens is facing toward the front of the optical tube.
5. Remove the lens caps from both ends of the finderscope.



Figure 2-17

Aligning the Finderscope

Use the following steps to align the finderscope:

1. Locate a distant daytime object and center it in a low power (20mm) eyepiece in the main telescope.
2. Look through the finderscope (the eyepiece end of the finderscope) and take notice of the position of the same object.
3. Without moving the main telescope, turn the adjustment thumb screws located around the finderscope bracket until the crosshairs of the finderscope are centered on the object chosen with the main telescope.

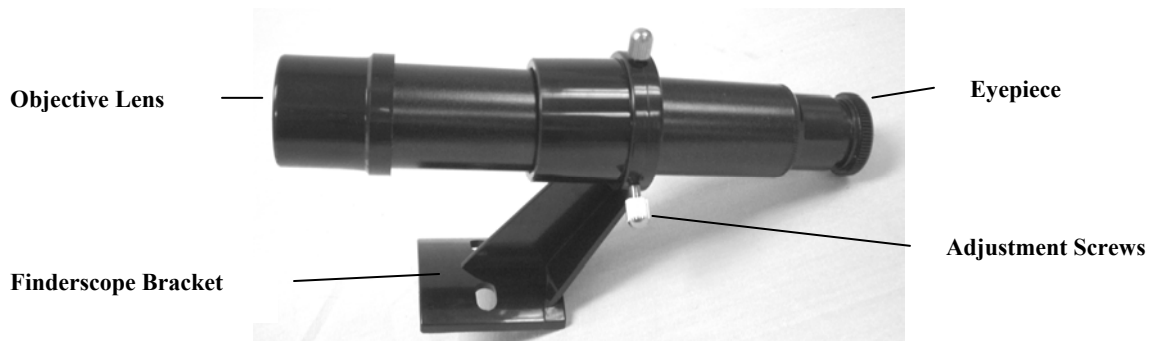


Figure 2-18 Finderscope with Bracket



A telescope is an instrument that collects and focuses light. The nature of the optical design determines how the light is focused. Some telescopes, known as refractors, use lenses, and other telescopes, known as reflectors (Newtonians), use mirrors.

Developed in the early 1600s, the **refractor** is the oldest telescope design. It derives its name from the method it uses to focus incoming light rays. The refractor uses a lens to bend or refract incoming light rays, hence the name (see Figure 3-1). Early designs used single element lenses. However, the single lens acts like a prism and breaks light down into the colors of the rainbow, a phenomenon known as chromatic aberration. To get around this problem, a two-element lens, known as an achromat, was introduced. Each element has a different index of refraction allowing two different wavelengths of light to be focused at the same point. Most two-element lenses, usually made of crown and flint glasses, are corrected for red and green light. Blue light may still be focused at a slightly different point.

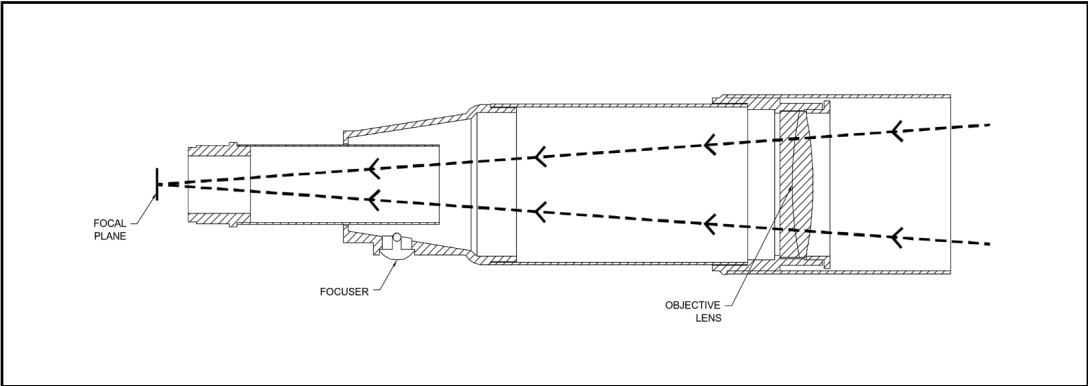


Figure 3-1
A cutaway view of the light path of the Refractor optical design

A **Newtonian** reflector uses a single concave mirror as its primary. Light enters the tube traveling to the mirror at the back end. There light is bent forward in the tube to a single point, its focal point. Since putting your head in front of the telescope to look at the image with an eyepiece would keep the reflector from working, a flat mirror called a *diagonal* intercepts the light and points it out the side of the tube at right angles to the tube. The eyepiece is placed there for easy viewing.

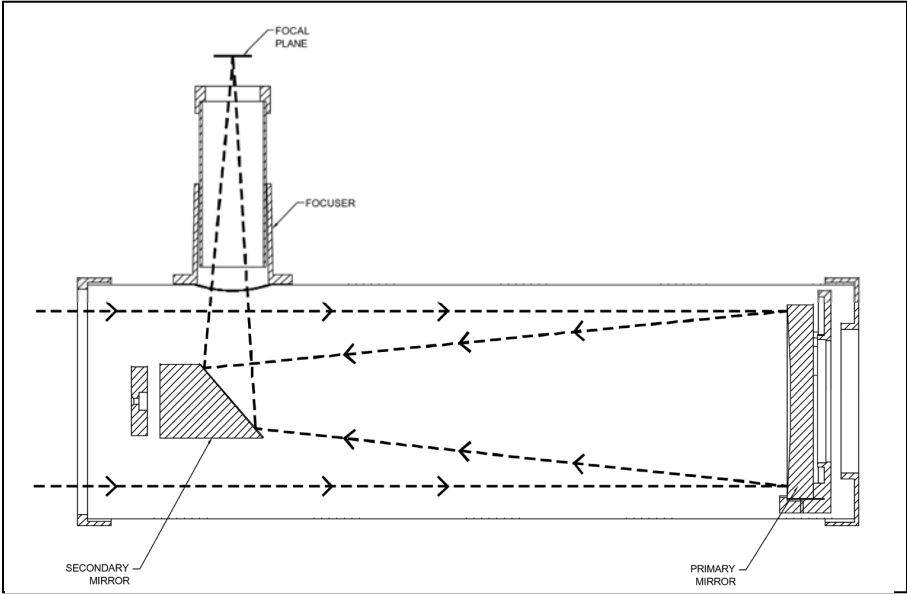


Figure 3-2
Cutaway view of the light path of the Newtonian optical design

Newtonian Reflector telescopes replace heavy lenses with mirrors to collect and focus the light, providing much more light-gathering power for the money spent. Because the light path is intercepted and reflected out to the side, you can have focal lengths up to 1000mm and still enjoy a telescope that is relatively compact and portable. A Newtonian Reflector telescope offers such impressive light-gathering characteristics you can take a serious interest in deep space astronomy even on a modest budget. Newtonian Reflector telescopes do require more care and maintenance because the primary mirror is exposed to air and dust. However, this small drawback does not hamper this type of telescope's popularity with those who want an economical telescope that can still resolve faint, distant objects.

Image Orientation

The image orientation changes depending on how the eyepiece is inserted into the telescope. When using a star diagonal with refractors, the image is right-side-up, but reversed from left-to-right (i.e., mirror image). If inserting the eyepiece directly into the focuser of a refractor (i.e., without the diagonal), the image is upside-down and reversed from left-to-right (i.e., inverted). However, when using the PowerSeeker refractor and the standard erect image diagonal, the image is correctly oriented in every aspect.

Newtonian reflectors produce a right-side-up image but the image will appear rotated based on the location of the eyepiece holder in relation to the ground. However, by using the erect image eyepiece supplied with the PowerSeeker Newtonian, the image is correctly oriented.



Figure 3-3

Focusing

To focus your refractor or Newtonian telescope, simply turn the focus knob located directly below the eyepiece holder (see Figures 2-13, 2-14 and 2-15). Turning the knob clockwise allows you to focus on an object that is farther than the one you are currently observing. Turning the knob counterclockwise from you allows you to focus on an object closer than the one you are currently observing.

Note: If you wear corrective lenses (specifically glasses), you may want to remove them when observing with an eyepiece attached to the telescope. However, when using a camera you should always wear corrective lenses to ensure the sharpest possible focus. If you have astigmatism, corrective lenses must be worn at all times.

Calculating Magnification

You can change the power of your telescope just by changing the eyepiece (ocular). To determine the magnification of your telescope, simply divide the focal length of the telescope by the focal length of the eyepiece used. In equation format, the formula looks like this:

$$\text{Magnification} = \frac{\text{Focal Length of Telescope (mm)}}{\text{Focal Length of Eyepiece (mm)}}$$

Let's say, for example, you are using the 20mm eyepiece that came with your telescope. To determine the magnification you divide the focal length of your telescope (the PowerSeeker 60AZ for this example has a focal length of 700mm) by the focal length of the eyepiece, 20mm. Dividing 700 by 20 yields a magnification of 35x.

Although the power is variable, each instrument under average skies has a limit to the highest useful magnification. The general rule is that 60 power can be used for every inch of aperture. For example, the PowerSeeker 60AZ is 2.4" inches in diameter. Multiplying 2.4 by 60 gives a maximum useful magnification of 144 power. Although this is the maximum useful magnification, most observing is done in the range of 20 to 35 power for every inch of aperture which is 48 to 84 times for the PowerSeeker 60AZ telescope. You can determine the magnification for your telescope the same way.

Note on Using High Powers – Higher powers are used mainly for lunar and sometimes planetary observing where you can greatly enlarge the image, but remember that the contrast and brightness will be very low due to the high magnification. Using the 4mm eyepiece together with the 3x Barlow lens gives extremely high power and can be used on rare occasions – you will achieve the power but the image will be dark with low contrast because you have magnified it to the maximum possible. For the brightest images with the highest contrast levels, use lower powers.

Determining Field of View

Determining the field of view is important if you want to get an idea of the angular size of the object you are observing. To calculate the actual field of view, divide the apparent field of the eyepiece (supplied by the eyepiece manufacturer) by the magnification. In equation format, the formula looks like this:

$$\text{True Angular Field} = \frac{\text{Apparent Field of Eyepiece}}{\text{Magnification}}$$

As you can see, before determining the field of view, you must calculate the magnification. Using the example in the previous section, we can determine the field of view using the same 20mm eyepiece that is supplied standard with the PowerSeeker 60AZ telescope. The 20mm eyepiece has an apparent field of view of 50°. Divide the 50° by the magnification, which is 35 power. This yields an actual (true) field of 1.4°.

To convert degrees to feet at 1,000 yards, which is more useful for terrestrial observing, simply multiply by 52.5. Continuing with our example, multiply the angular field of 1.4° by 52.5. This produces a linear field width of 74 feet at a distance of one thousand yards.

General Observing Hints

When using any optical instrument, there are a few things to remember to ensure you get the best possible image.

- Never look through window glass. Glass found in household windows is optically imperfect, and as a result, may vary in thickness from one part of a window to the next. This inconsistency can and will affect the ability to focus your telescope. In most cases you will not be able to achieve a truly sharp image, while in some cases, you may actually see a double image.
- Never look across or over objects that are producing heat waves. This includes asphalt parking lots on hot summer days or building rooftops.
- Hazy skies, fog, and mist can also make it difficult to focus when viewing terrestrially. The amount of detail seen under these conditions is greatly reduced.
- If you wear corrective lenses (specifically glasses), you may want to remove them when observing with an eyepiece attached to the telescope. When using a camera, however, you should always wear corrective lenses to ensure the sharpest possible focus. If you have astigmatism, corrective lenses must be worn at all times.

CELESTRON **Astronomy Basics**

Up to this point, this manual covered the assembly and basic operation of your telescope. However, to understand your telescope more thoroughly, you need to know a little about the night sky. This section deals with observational astronomy in general and includes information on the night sky and polar alignment.

The Celestial Coordinate System

To help find objects in the sky, astronomers use a celestial coordinate system that is similar to our geographical coordinate system here on Earth. The celestial coordinate system has poles, lines of longitude and latitude, and an equator. For the most part, these remain fixed against the background stars.

The celestial equator runs 360 degrees around the Earth and separates the northern celestial hemisphere from the southern. Like the Earth's equator, it bears a reading of zero degrees. On Earth this would be latitude. However, in the sky this is referred to as declination, or DEC for short. Lines of declination are named for their angular distance above and below the celestial equator. The lines are broken down into degrees, minutes of arc, and seconds of arc. Declination readings south of the equator carry a minus sign (-) in front of the coordinate and those north of the celestial equator are either blank (i.e., no designation) or preceded by a plus sign (+).

The celestial equivalent of longitude is called Right Ascension, or R.A. for short. Like the Earth's lines of longitude, they run from pole to pole and are evenly spaced 15 degrees apart. Although the longitude lines are separated by an angular distance, they are also a measure of time. Each line of longitude is one hour apart from the next. Since the Earth rotates once every 24 hours, there are 24 lines total. As a result, the R.A. coordinates are marked off in units of time. It begins with an arbitrary point in the constellation of Pisces designated as 0 hours, 0 minutes, 0 seconds. All other points are designated by how far (i.e., how long) they lag behind this coordinate after it passes overhead moving toward the west.

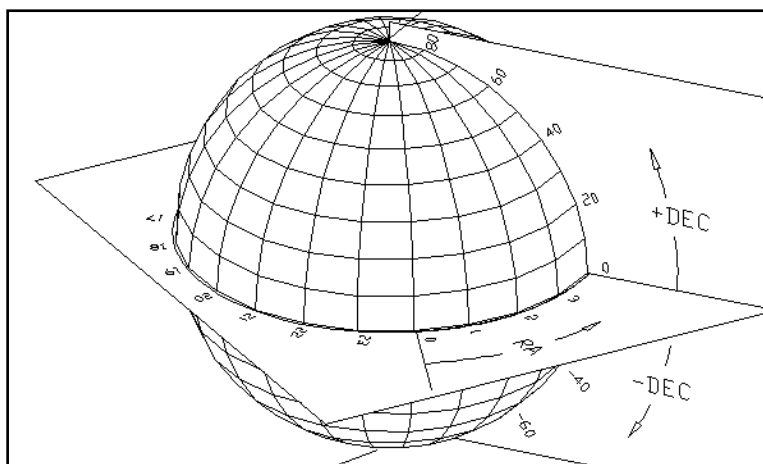
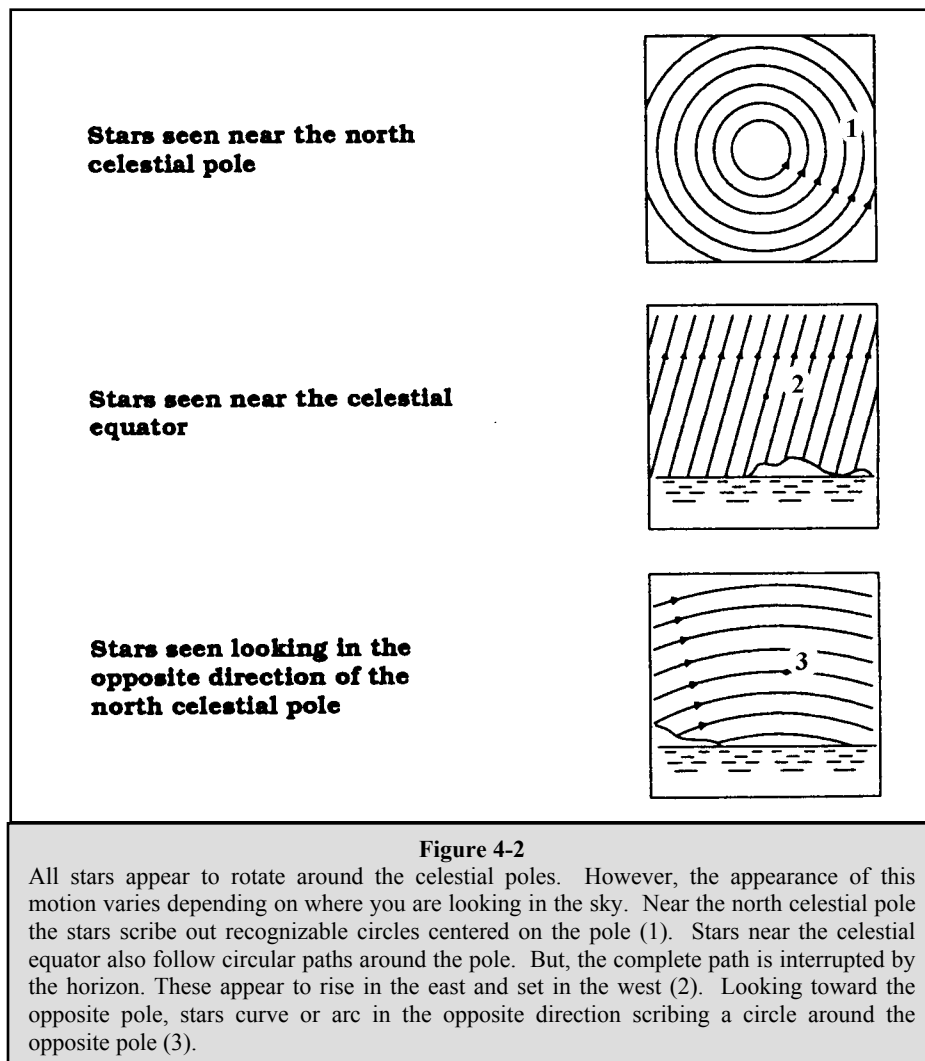


Figure 4-1

The celestial sphere seen from the outside showing R.A. and DEC.

Motion of the Stars

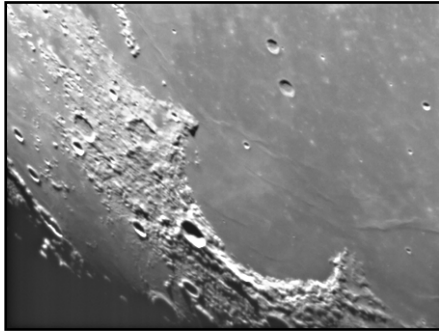
The daily motion of the Sun across the sky is familiar to even the most casual observer. This daily trek is not the Sun moving as early astronomers thought, but the result of the Earth's rotation. The Earth's rotation also causes the stars to do the same, scribing out a large circle as the Earth completes one rotation. The size of the circular path a star follows depends on where it is in the sky. Stars near the celestial equator form the largest circles rising in the east and setting in the west. Moving toward the north celestial pole, the point around which the stars in the northern hemisphere appear to rotate, these circles become smaller. Stars in the mid-celestial latitudes rise in the northeast and set in the northwest. Stars at high celestial latitudes are always above the horizon, and are said to be circumpolar because they never rise and never set. You will never see the stars complete one circle because the sunlight during the day washes out the starlight. However, part of this circular motion of stars in this region of the sky can be seen by setting up a camera on a tripod and opening the shutter for a couple hours. The timed exposure will reveal semicircles that revolve around the pole. (This description of stellar motions also applies to the southern hemisphere except all stars south of the celestial equator move around the south celestial pole.)



CELESTRON **Celestial Observing**

With your telescope set up, you are ready to use it for observing. This section covers visual observing hints for both solar system and deep sky objects as well as general observing conditions which will affect your ability to observe.

Observing the Moon



Often, it is tempting to look at the Moon when it is full. At this time, the face we see is fully illuminated and its light can be overpowering. In addition, little or no contrast can be seen during this phase.

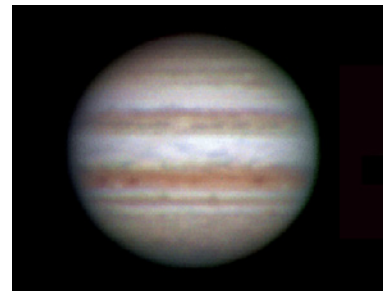
One of the best times to observe the Moon is during its partial phases (around the time of first or third quarter). Long shadows reveal a great amount of detail on the lunar surface. At low power you will be able to see most of the lunar disk at one time. Change to optional eyepieces for higher power (magnification) to focus in on a smaller area.

Lunar Observing Hints

To increase contrast and bring out detail on the lunar surface, use optional filters. A yellow filter works well at improving contrast while a neutral density or polarizing filter will reduce overall surface brightness and glare.

Observing the Planets

Other fascinating targets include the five naked eye planets. You can see Venus go through its lunar-like phases. Mars can reveal a host of surface detail and one, if not both, of its polar caps. You will be able to see the cloud belts of Jupiter and the great Red Spot (if it is visible at the time you are observing). In addition, you will also be able to see the moons of Jupiter as they orbit the giant planet. Saturn, with its beautiful rings, is easily visible at moderate power.



Planetary Observing Hints

- Remember that atmospheric conditions are usually the limiting factor on how much planetary detail will be visible. So, avoid observing the planets when they are low on the horizon or when they are directly over a source of radiating heat, such as a rooftop or chimney. See the "Seeing Conditions" section later in this section.
- To increase contrast and bring out detail on the planetary surface, try using Celestron eyepiece filters.

Observing the Sun

Although overlooked by many amateur astronomers, solar observation is both rewarding and fun. However, because the Sun is so bright, special precautions must be taken when observing our star so as not to damage your eyes or your telescope.

For safe solar viewing, use a proper solar filter that reduces the intensity of the Sun's light, making it safe to view. With a filter you can see sunspots as they move across the solar disk and faculae, which are bright patches seen near the Sun's edge.

- The best time to observe the Sun is in the early morning or late afternoon when the air is cooler.
- To center the Sun without looking into the eyepiece, watch the shadow of the telescope tube until it forms a circular shadow.

Observing Deep-Sky Objects

Deep-sky objects are simply those objects outside the boundaries of our solar system. They include star clusters, planetary nebulae, diffuse nebulae, double stars and other galaxies outside our own Milky Way. Most deep-sky objects have a large angular size. Therefore, low-to-moderate power is all you need to see them. Visually, they are too faint to reveal any of the color seen in long exposure photographs. Instead, they appear black and white. And, because of their low surface brightness, they should be observed from a dark-sky location. Light pollution around large urban areas washes out most nebulae making them difficult, if not impossible, to observe. Light Pollution Reduction filters help reduce the background sky brightness, thus increasing contrast.

Star Hopping

One convenient way to find deep-sky objects is by star hopping. Star hopping is done by using bright stars to "guide" you to an object. For successful star hopping, it is helpful to know the field of view of your telescope. If you're using the standard 20 mm eyepiece with the PowerSeeker telescope, your field of view is approximately 1.4° or so. If you know an object is 3° away from your present location, then you just need to move about two fields of view. If you're using another eyepiece, then consult the section on determining field of view. Listed below are directions for locating two popular objects.

The Andromeda Galaxy (Figure 5-1), also known as M31, is an easy target. To find M31:

1. Locate the constellation of Pegasus, a large square visible in the fall (in the eastern sky, moving toward the point overhead) and winter months (overhead, moving toward the west).
2. Start at the star in the northeast corner—Alpha (α) Andromedae.
3. Move northeast approximately 7° . There you will find two stars of equal brightness—Delta (δ) and Pi (π) Andromeda—about 3° apart.
4. Continue in the same direction another 8° . There you will find two stars—Beta (β) and Mu (μ) Andromedae—also about 3° apart.
5. Move 3° northwest—the same distance between the two stars—to the Andromeda galaxy.

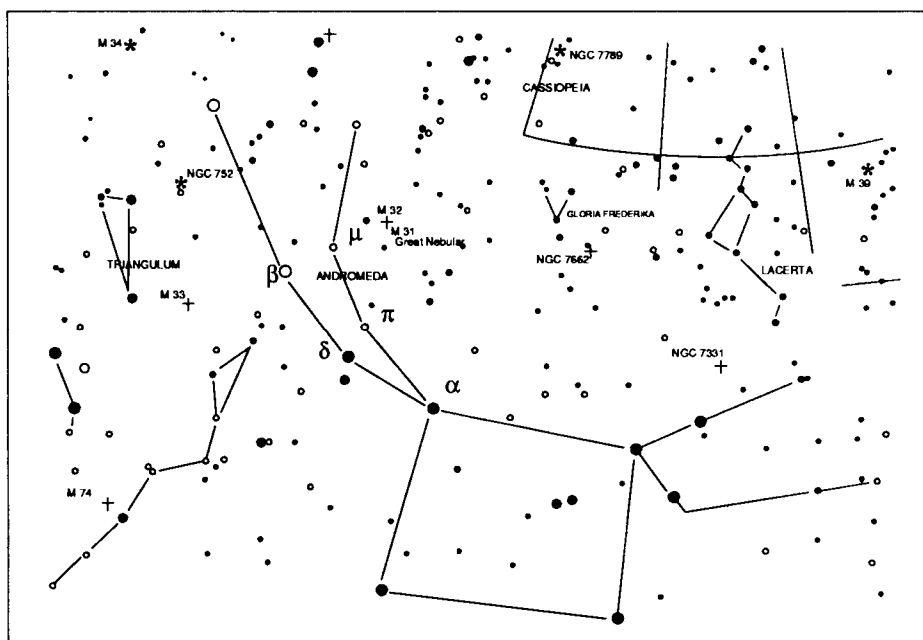


Figure 5-1

Star hopping to the Andromeda Galaxy (M31) is a snap, since all the stars needed to do so are visible to the naked eye.

Star hopping will take some getting used to and objects that don't have stars near them that are visible to the naked eye are challenging. One such object is M57 (Figure 5-2), the famed Ring Nebula. Here's how to find it:

1. Find the constellation of Lyra, a small parallelogram visible in the summer and fall months. Lyra is easy to pick out because it contains the bright star Vega.
2. Start at the star Vega—Alpha (α) Lyrae—and move a few degrees southeast to find the parallelogram. The four stars that make up this geometric shape are all similar in brightness, making them easy to see.
3. Locate the two southernmost stars that make up the parallelogram—Beta (β) and Gamma (γ) Lyra.
4. Point about halfway between these two stars.
5. Move about $\frac{1}{2}^\circ$ toward Beta (β) Lyra, while remaining on a line connecting the two stars.
6. Look through the telescope and the Ring Nebula should be in your field of view. The Ring Nebula's angular size is quite small and difficult to see.
7. Because the Ring Nebula is rather faint, you may need to use “averted vision” to see it. “Averted vision” is a technique of looking slightly away from the object you're observing. So, if you are observing the Ring Nebula, center it in your field of view and then look off toward the side. This causes light from the object viewed to fall on the black and white sensitive rods of your eyes, rather than your eyes color sensitive cones. (Remember that when observing faint objects, it's important to try to observe from a dark location, away from street and city lights. The average eye takes about 20 minutes to fully adapt to the darkness. So always use a red-filtered flashlight to preserve your dark-adapted night vision).

These two examples should give you an idea of how to star hop to deep-sky objects. To use this method on other objects, consult a star atlas, then star hop to the object of your choice using “naked eye” stars.

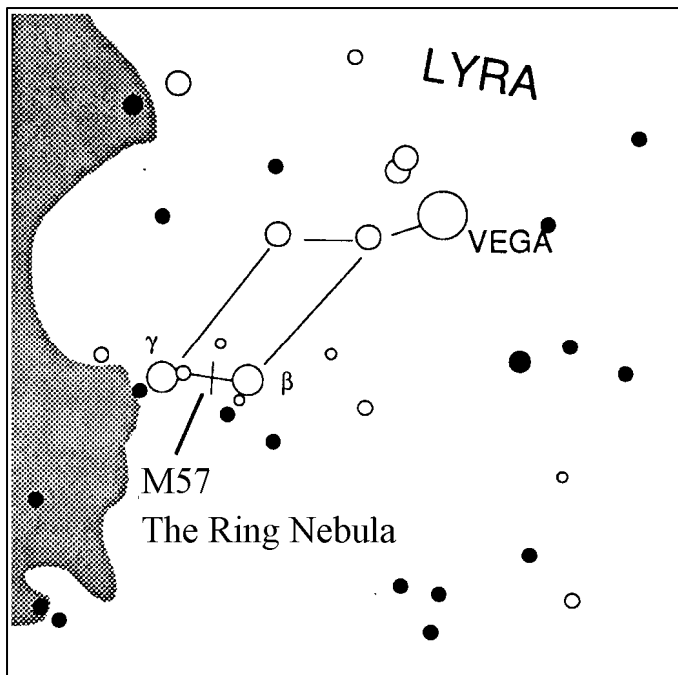


Figure 5-2

Seeing Conditions

Viewing conditions affect what you can see through your telescope during an observing session. Conditions include transparency, sky illumination, and seeing. Understanding viewing conditions and the effect they have on observing will help you get the most out of your telescope.

Transparency

Transparency is the clarity of the atmosphere which is affected by clouds, moisture, and other airborne particles. Thick cumulus clouds are completely opaque while cirrus can be thin, allowing the light from the brightest stars through. Hazy skies absorb more light than clear skies making fainter objects harder to see and reducing contrast on brighter objects. Aerosols ejected into the upper atmosphere from volcanic eruptions also affect transparency. Ideal conditions are when the night sky is inky black.

Sky Illumination

General sky brightening caused by the Moon, aurorae, natural airglow, and light pollution greatly affect transparency. While not a problem for the brighter stars and planets, bright skies reduce the contrast of extended nebulae making them difficult, if not impossible to see. To maximize your observing, limit deep sky viewing to moonless nights far from the light polluted skies found around major urban areas. LPR filters enhance deep sky viewing from light polluted areas by blocking unwanted light while transmitting light from certain deep sky objects. You can, on the other hand, observe planets and stars from light polluted areas or when the Moon is out.

Seeing

Seeing conditions refers to the stability of the atmosphere and directly affects the amount of fine detail seen in extended objects. The air in our atmosphere acts as a lens which bends and distorts incoming light rays. The amount of bending depends on air density. Varying temperature layers have different densities and, therefore, bend light differently. Light rays from the same object arrive slightly displaced creating an imperfect or smeared image. These atmospheric disturbances vary from time-to-time and place-to-place. The size of the air parcels compared to your aperture determines the "seeing" quality. Under good seeing conditions, fine detail is visible on the brighter planets like Jupiter and Mars, and stars are pinpoint images. Under poor seeing conditions, images are blurred and stars appear as blobs.

The conditions described here apply to both visual and photographic observations.



Figure 5-3

Seeing conditions directly affect image quality. These drawings represent a point source (i.e., star) under bad seeing conditions (left) to excellent conditions (right). Most often, seeing conditions produce images that lie somewhere between these two extremes.



CELESTRON[®] **Astrography**

The PowerSeeker series of telescopes was designed for visual observing. After looking at the night sky for a while you may want to try your hand at photography of it. There are a few simple forms of photography possible with your 60AZ, 70AZ and 76AZ telescope for celestial as well as terrestrial pursuits although celestial photography is best done using an equatorial mount or computerized altazimuth mount. Below is just a very brief discussion of some of the methods of photography available and suggest you search out various books for detailed information on the subject matter.

As a minimum you will need a digital camera or a 35mm SLR camera. Attach your camera to the telescope with:

- Digital camera – you will need the Universal Digital Camera Adapter (# 93626). The adapter allows the camera to be mounted rigidly for terrestrial as well as prime focus astrophotography.
- 35mm SLR camera – you will need to remove your lens from the camera and attach a T-Ring for your specific camera brand. Then, you will need a T-Adapter (# 93625) to attach on one end to the T-Ring and the other end to the telescope focus tube. Your telescope is now the camera lens.

Short Exposure Prime Focus Photography

Short exposure prime focus photography is the best way to begin imaging celestial objects. It is done by attaching your camera to the telescope as described in the paragraph above. A couple of points to keep in mind:

- You can image the Moon as well as the brighter planets with very short exposures. You will have to experiment with various settings and exposure times. Much information can be obtained from your camera instruction manual which can supplement what you can find in detailed books on the subject matter.
- Do your photography from a dark sky observing site if possible.
- Remember, this is just very simple photography. For more detailed and serious astrophotography you need an equatorial mount or a computerized altazimuth mount.

Planetary & Lunar Photography with Special Imagers

During the last few years a new technology has evolved which makes taking superb images of the planets and moon relatively easy and the results are truly amazing. Celestron offers the NexImage (# 93712) which is a special camera and included is software for image processing. You can capture planetary images your first night out which rivals what professionals were doing with large telescopes just a few short years ago.

CCD Imaging for Deep-Sky Objects

Special cameras have been developed for taking images of deep sky images. These have evolved over the last several years to become much more economical and amateurs can take fantastic images. Several books have been written on how to get the best images possible. The technology continues to evolve with better and easier to use products on the market.

Terrestrial Photography

Your telescope makes an excellent telephoto lens for terrestrial (land) photography. You can take images of various scenic views, wildlife, nature, and just about anything. You will have to experiment with focusing, speeds, etc. to get the best image desired. You can adapt your camera per the instructions at the top of this page.

CELESTRON **Telescope Maintenance**

While your telescope requires little maintenance, there are a few things to remember that will ensure your telescope performs at its best.

Care and Cleaning of the Optics

Occasionally, dust and/or moisture may build up on the objective lens or primary mirror depending on which type of telescope you have. Special care should be taken when cleaning any instrument so as not to damage the optics.

If dust has built up on the optics, remove it with a brush (made of camel's hair) or a can of pressurized air. Spray at an angle to the glass surface for approximately two to four seconds. Then, use an optical cleaning solution and white tissue paper to remove any remaining debris. Apply the solution to the tissue and then apply the tissue paper to the optics. Low pressure strokes should go from the center of the lens (or mirror) to the outer portion. **Do NOT rub in circles!**

You can use a commercially made lens cleaner or mix your own. A good cleaning solution is isopropyl alcohol mixed with distilled water. The solution should be 60% isopropyl alcohol and 40% distilled water. Or, liquid dish soap diluted with water (a couple of drops per one quart of water) can be used.

Occasionally, you may experience dew build-up on the optics of your telescope during an observing session. If you want to continue observing, the dew must be removed, either with a hair dryer (on low setting) or by pointing the telescope at the ground until the dew has evaporated.

If moisture condenses on the inside of the optics, remove the accessories from the telescope. Place the telescope in a dust-free environment and point it down. This will remove the moisture from the telescope tube.

To minimize the need to clean your telescope, replace all lens covers once you have finished using it. Since the cells are NOT sealed, the covers should be placed over the openings when not in use. This will prevent contaminants from entering the optical tube.

Internal adjustments and cleaning should be done only by the Celestron repair department. If your telescope is in need of internal cleaning, please call the factory for a return authorization number and price quote.

Collimation of a Newtonian

The optical performance of most Newtonian reflecting telescopes can be optimized by re-collimating (aligning) the telescope's optics, as needed. To collimate the telescope simply means to bring its optical elements into balance. Poor collimation will result in optical aberrations and distortions.

Before collimating your telescope, take time to familiarize yourself with all its components. The primary mirror is the large mirror at the back end of the telescope tube. This mirror is adjusted by loosening and tightening the three screws, placed 120 degrees apart, at the end of the telescope tube. The secondary mirror (the small, elliptical mirror under the focuser, in the front of the tube) also has three adjustment screws (you will need optional tools (described below) to perform collimation. To determine if your telescope needs collimation first point your telescope toward a bright wall or blue sky outside.

Aligning the Secondary Mirror

The following describes the procedure for daytime collimation of your telescope using the optional Newtonian Collimation Tool (#94183) offered by Celestron. To collimate the telescope without the Collimation Tool, read the following section on night time star collimation. For very precise collimation, the optional Collimation Eyepiece 1 1/4" (#94182) is offered.

If you have an eyepiece in the focuser, remove it. Rack the focuser tube in completely, using the focusing knobs, until its silver tube is no longer visible. You will be looking through the focuser at a reflection of the secondary mirror, projected from the primary mirror. During this step, ignore the silhouetted reflection from the primary mirror. Insert the collimating cap into the focuser and look through it. With the focus pulled in all the way, you should be able to see the entire primary mirror reflected in the secondary mirror. If the primary mirror is not centered in the secondary mirror, adjust the secondary mirror screws by alternately tightening and loosening them until the periphery of the primary mirror is centered in your view. DO NOT loosen or tighten the center screw in the secondary mirror support, because it maintains proper mirror position.

Aligning the Primary Mirror

Now adjust the primary mirror screws to re-center the reflection of the small secondary mirror, so it's silhouetted against the view of the primary. As you look into the focuser, silhouettes of the mirrors should look concentric. Repeat steps one and two until you have achieved this.

Remove the collimating cap and look into the focuser, where you should see the reflection of your eye in the secondary mirror.

Newtonian collimation views as seen through the focuser using the collimation cap

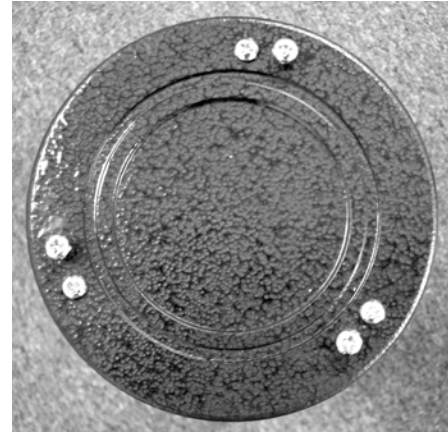
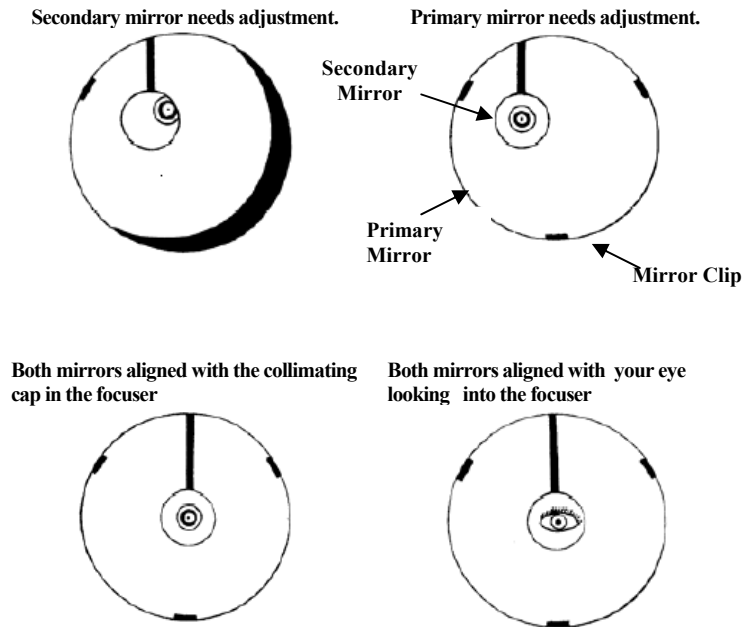


Figure 7-1 PowerSeeker 76AZ

Night Time Star Collimating

After successfully completing daytime collimation, night time star collimation can be done by closely adjusting the primary mirror while the telescope tube is on its mount and pointing at a bright star. The telescope should be set up at night and a star's image should be studied at medium to high power (30-60 power per inch of aperture). If a non-symmetrical focus pattern is present, then it may be possible to correct this by re-collimating only the primary mirror.

Procedure (Please read this section completely before beginning):

To star collimate in the Northern Hemisphere, point at a stationary star like the North Star (Polaris). It can be found in the north sky, at a distance above the horizon equal to your latitude. It's also the end star in the handle of the Little Dipper. Polaris is not the brightest star in the sky and may even appear dim, depending upon your sky conditions. For the Southern Hemisphere, point at Sigma Octantis.

Prior to re-collimating the primary mirror, locate the collimation screws on the rear of the telescope tube. The rear cell (shown in Figure 7-1) has three large screws which are used for collimation and three small screws which are used to lock the mirror in place. The collimation screws tilt the primary mirror. You will start by loosening the small locking screws a few turns each. Normally, motions on the order of an $\frac{1}{8}$ turn will make a difference, with approximately a $\frac{1}{2}$ to $\frac{3}{4}$ turn being the maximum required for the large collimation screws. Turn one collimation screw at a time and with a collimation tool or eyepiece see how the collimation is affected (see the following paragraph below). It will take some experimenting but you will eventually get the centering you desire.

It is best to use the optional collimation tool or collimating eyepiece. Look into the focuser and notice if the secondary reflection has moved closer to the center of the primary mirror.

With Polaris or a bright star centered within the field of view, focus with either the standard ocular or your highest power ocular, i.e. the shortest focal length in mm, such as a 6mm or 4mm. Another option is to use a longer focal length ocular with a Barlow lens. When a star is in focus it should look like a sharp pinpoint of light. If, when focusing on the star, it is irregular in shape or appears to have a flare of light at its edge, this means your mirrors aren't in alignment. If you notice the appearance of a flare of light from the star that remains stable in location, just as you go in and out of exact focus, then re-collimation will help sharpen the image.

When satisfied with the collimation, tighten the small locking screws

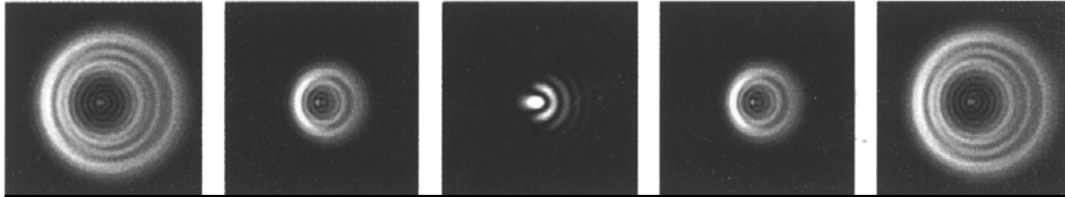


Figure 7-2

Even though the star pattern appears the same on both sides of focus, they are asymmetric. The dark obstruction is skewed off to the left side of the diffraction pattern indicating poor collimation.

Take note of the direction the light appears to flare. For example, if it appears to flare toward the three o'clock position in the field of view, then you must move whichever screw or combination of collimation screws necessary to move the star's image toward the direction of the flaring. In this example, you would want to move the image of the star in your eyepiece, by adjusting the collimation screws, toward the three o'clock position in the field of view. It may only be necessary to adjust a screw enough to move the star's image from the center of the field of view to about halfway, or less, toward the field's edge (when using a high power ocular).

Collimation adjustments are best made while viewing the star's position in the field of view and turning the adjustment screws simultaneously. This way, you can see exactly which way the movement occurs. It may be helpful to have two people working together: one viewing and instructing which screws to turn and by how much, and the other performing the adjustments.

IMPORTANT: After making the first, or each adjustment, it is necessary to re-aim the telescope tube to re-center the star again in the center of the field of view. The star image can then be judged for symmetry by going just inside and outside of exact focus and noting the star's pattern. Improvement should be seen if the proper adjustments are made. Since three screws are present, it may be necessary to move at least two to achieve the necessary mirror movement.

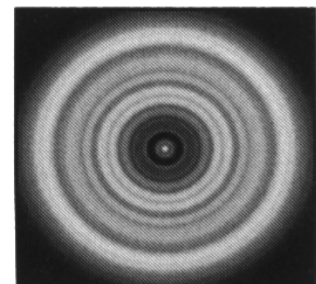


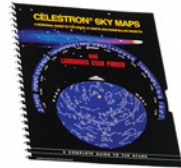
Figure 7-3

A collimated telescope should appear as a symmetrical ring pattern similar to the diffraction disk seen here.

CELESTRON **Optional Accessories**

You will find that additional accessories for your PowerSeeker telescope will enhance your viewing pleasure and expand the usefulness of your telescope. This is just a short listing of various accessories with a brief description. Visit the Celestron website or the Celestron Accessory Catalog for complete descriptions and all accessories available.

Sky Maps (# 93722) – Celestron Sky Maps are the ideal teaching guide for learning the night sky. Even if you already know your way around the major constellations, these maps can help you locate all kinds of fascinating objects.



Omni Plossl Eyepieces – For 60AZ, 70AZ & 76AZ only. These eyepieces are economically priced and offer razor sharp views across the entire field. They are a 4-element lens design and have the following focal lengths: 4mm, 6mm, 9mm, 12.5mm, 15mm, 20mm, 25mm, 32mm, and 40mm – all in 1.25” barrels.

Omni Barlow Lens (# 93326) – Used with any 60AZ, 70AZ & 76AZ eyepiece, it doubles the magnification of that eyepiece. A Barlow lens is a negative lens that increases the focal length of a telescope. The 2x Omni is a 1.25” barrel, is under 3” (76mm) long, and weights only 4oz. (113gr.).

Moon Filter (# 94119-A) – This is an economical 1.25” eyepiece filter (for 60AZ, 70AZ & 76AZ) for reducing the brightness of the moon and improving contrast, so greater detail can be observed on the lunar surface.



UHC/LPR Filter 1.25” (# 94123) – This filter is designed to enhance your views of deep sky astronomical objects when viewed from urban areas. It selectively reduces the transmission of certain wavelengths of light, specifically those produced by artificial lights. For the 60AZ, 70AZ & 76AZ only.

Flashlight, Night Vision (# 93588) – The Celestron flashlight uses two red LED’s to preserve night vision better than red filters or other devices. Brightness is adjustable. Operates on a single 9-volt included battery.

Collimation Tool (# 94183) – Collimating your Newtonian telescope is easily accomplished with this handy accessory which includes detailed instructions.

Collimation Eyepiece – 1.25” (# 94182) – The collimation eyepiece is ideal for precise collimation of Newtonian telescopes.

Digital Camera Adapter – Universal (# 93626) – A universal mounting platform that allows you to do afocal photography (photography through the eyepiece of a telescope) with your digital camera.



T-Adapter – Universal 1.25” (# 93625) – This adapter fits the 1.25” focuser of your 60AZ, 70AZ & 76AZ telescope. It allows you to attach your 35mm SLR camera for terrestrial as well as lunar and planetary photography.

PowerSeeker Specifications	21039	21041	21036	21044
	PS 50AZ	PS 60AZ	PS 70AZ	PS 76AZ
Optical Design	Refractor	Refractor	Refractor	Newtonian
Aperture	50mm (2.0")	60mm (2.4")	70mm (2.8")	76mm (3.0")
Focal Length	600mm	700mm	700mm	700mm
Focal Ratio	f/12	f/12	f/10	f/9
Optical Coatings	fully coated	fully coated	fully coated	fully coated
Finderscope	5x24	5x24	5x24	5x24
Diagonal	Star Diagonal 0.96"	Erect Image 1.25"	Erect Image 1.25"	n/a
Eyepieces	20mm .96" (30x)	20mm 1.25" (35x)	20mm 1.25" (35x)	20mm 1.25" Erect Image (35x)
	12mm .96" (50x)	n/a	n/a	n/a
	4mm .96" (150x)	4mm 1.25" (175x)	4mm 1.25" (175x)	4mm 1.25" (175x)
Apparent FOV -- 20mm @ 50°				
-- 10mm @ 40°				
Barlow Lens - 3x	0.96"	1.25"	1.25"	1.25"
	w/20mm (90x)	w/20mm (105x)	w/20mm (105x)	w/20mm (105x)
	w/12mm (150x)	n/a	n/a	n/a
	w/4mm (450x)	w/4mm (525x)	w/4mm (525x)	w/4mm (525x)
Angular Field of View w/20mm eyepiece	1.7°	1.4°	1.4°	1.4°
Linear FOV w/20mm eyepiece -ft/1000yds	89	74	74	74
Mount	Altazimuth	Altazimuth	Altazimuth	Altazimuth
Altitude Locking Knob	yes	yes	yes	yes
Azimuth Lock	no	yes	yes	yes
CD-ROM "The SkyX"	yes	yes	yes	yes
Highest Useful Magnification	120x	142x	165x	180x
Limiting Stellar Magnitude	11.1	11.4	11.7	11.9
Resolution -- Raleigh (arc seconds)	2.66	2.31	1.98	1.82
Resolution -- Dawes Limit " "	2.28	1.93	1.66	1.53
Light Gathering Power	51x	73x	100x	118x
Optical Tube Length	22" (56cm)	28" (71cm)	30" (76cm)	26" (66cm)
Telescope Weight	1.5# (0.7kg)	2.0# (0.9kg)	6# (2.7kg)	8.5# (3.9kg)
Note: Specifications are subject to change without notice or obligation				

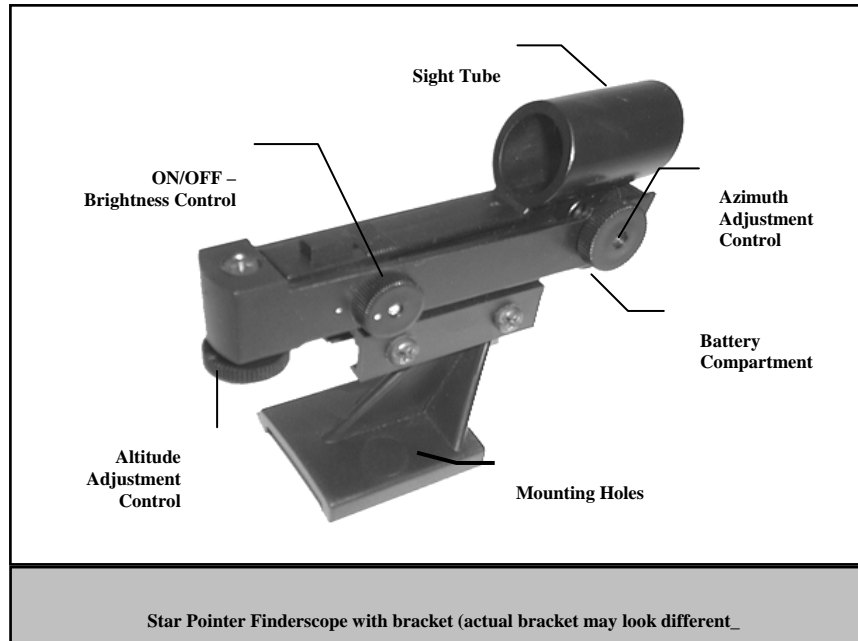
Instruction Manual Addendum for # 21036

This addendum includes information on two changes which apply to Model # 21036-WM

- Replacement of the 5x24 Finderscope to a deluxe Finderscope called the Celestron Star Pointer. The Star Pointer is the quickest and easiest way to point your telescope exactly at a desired object in the sky. It's like having a laser pointer that you can shine directly onto the night sky. The Star Pointer is a zero magnification pointing tool that uses a coated glass window to superimpose the image of a small red dot onto the night sky. While keeping both eyes open when looking through the Star Pointer, simply move your telescope until the red dot, seen through the Star Pointer, merges with the object as seen with your unaided eye. The red dot is produced by a light-emitting diode (LED).
- The inclusion of an additional eyepiece – 10mm. This gives you two additional powers with your telescope – 70mm and 210 (using the Barlow Lens).

Installing the Star Pointer Finderscope

The Star Pointer comes equipped with a variable brightness control, two axes alignment control and mounting bracket. Before the Star Pointer is ready to be used, it must be attached to the telescope tube and properly aligned.



1. Remove the knurled nuts on the threaded posts on the optical tube (see Figure 2-17 in the instruction manual).
2. Mount the Star Pointer by placing the holes in the bracket over the posts protruding from the optical tube and then holding it in place thread on the knurled nuts and tighten them down.
3. Note that the Star Pointer should be oriented so that the Sight Tube is facing toward the front of the optical tube.

Star Pointer Operation

The Star Pointer is powered by a long life 3-volt lithium battery (#CR2032) located underneath the front portion of the Star Pointer. Like all finderscopes, the Star Pointer must be properly aligned with the main telescope before it can be used. This is a simple process using the azimuth and altitude control knobs located on the side and bottom of the Star Pointer. The alignment procedure is best done at night since the LED dot will be difficult to see during the day.

1. Before using the StarPointer, you must first remove the protective plastic cover over the battery (see image at left below).
2. To turn on the Star Pointer, rotate the variable brightness control clockwise until you here a "click". To increase the brightness level of the red dot, continue rotating the control knob about 180° until it stops.
3. Locate a bright star or planet and center it in a low power eyepiece in the main telescope.
4. With both eyes open, look through the glass window at the alignment star. If the Star Pointer is perfectly aligned, you will see the red LED dot overlap the alignment star. If the Star Pointer is not aligned, take notice of where the red dot is relative to the bright star.
5. Without moving the main telescope, turn the Star Pointer's azimuth and altitude alignment controls (see image at right below) until the red dot is directly over the alignment object.

If the LED dot is brighter than the alignment star, it may make it difficult to see the star. Turn the brightness control counterclockwise, until the red dot is the same brightness as the alignment star. This will make it easier to get an accurate alignment. The Star Pointer is now ready to be used.

